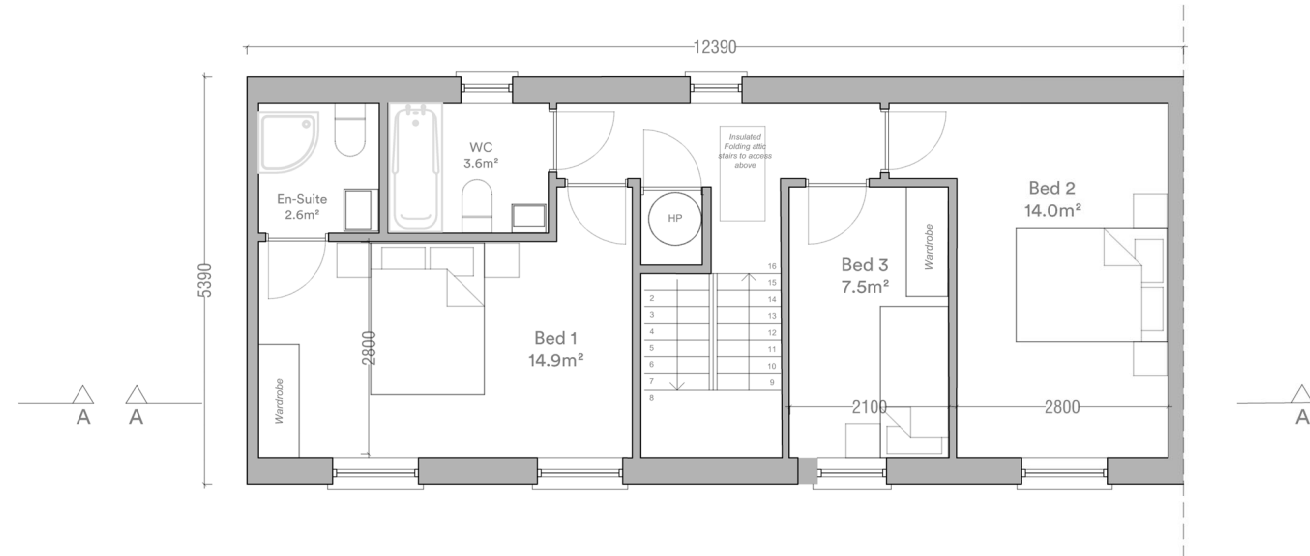
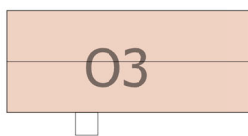


House Type O3  
Ground Floor Plan  
56.5m<sup>2</sup>



House Type O3  
First Floor Plan  
56.5m<sup>2</sup>



House Type O3  
3 Bed / 5 Person

Mid - Terrace		
Total Floor Area	113m <sup>2</sup>	(92m <sup>2</sup> )
Ground Floor Area	56.5m <sup>2</sup>	
First Floor Area	56.5m <sup>2</sup>	
Total Living Area	35.3m <sup>2</sup>	(34m <sup>2</sup> )
Total Bedroom Area	36.8m <sup>2</sup>	(32m <sup>2</sup> )
Total Storage Area	7.2m <sup>2</sup> *	(5m <sup>2</sup> )

Minimum standards shown in parentheses  
Refer to site layout for handing and orientation  
\*Includes 3.5m<sup>2</sup> of attic storage

Storage Area

Note: Please Refer to Site Plan for Handing and Orientation

